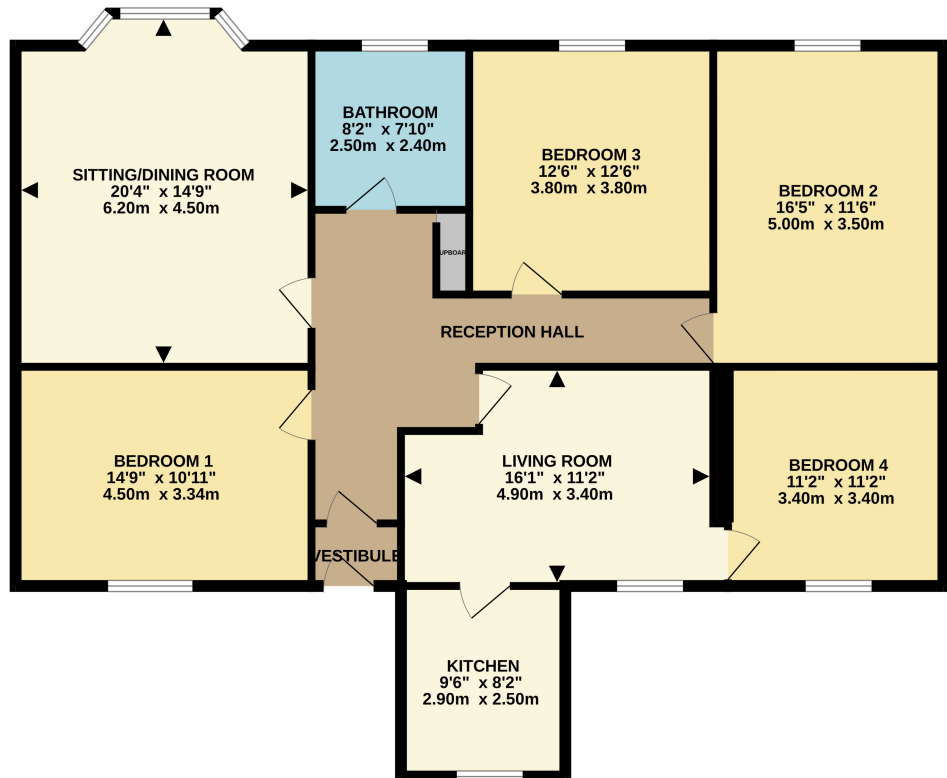




Doune Cottage, Strathleven Place, Dumbarton, G82 1BA

The agent offers to the market a unique style of property which is certain to catch the attention of a wide range of buyers. Purpose built as a 4 bedroom upper flat circa 1895 the commodious apartments on show offer versatility in their use.

FIRST FLOOR
1332 sq.ft. (123.7 sq.m.) approx.



TOTAL FLOOR AREA: 1332 sq.ft. (123.7 sq.m.) approx.

Whilst every attempt has been made to ensure the accuracy of the floorplan contained here, measurements of doors, windows, rooms and any other items are approximate and no responsibility is taken for any error, omission or mis-statement. This plan is for illustrative purposes only and should be used as such by any prospective purchaser. The services, systems and appliances shown have not been tested and no guarantee as to their operability or efficiency can be given.
Made with Metropix ©2023



David Muir Estate Agents
2 Church Street, Dumbarton,
G82 1QL

Tel 01389 734366
Fax 01389 742476

tracy@davidmuirestates.co.uk



Travel Directions

From the agents office travel towards roundabout. Take 3rd exit into Strathleven Place. Immediately on your left is Doune Cottage directly opposite the Library

Additional Information

Home Report Valuation: £180,000
Council Tax Band: E
Energy Efficiency Rating: D
Double Glazing
Gas Central Heating

Home Report

This property benefits from a Home Report which can be obtained from davidmuirestates.com or onesurvey.org

Disclaimer

These property details are set out as a general outline only and do not constitute any part of an Offer or Contract. All fixtures and fittings mentioned in these particulars are included in the sale. All others in the property are specifically excluded. Photographs are reproduced for general information and it must not be inferred that any item is included for sale with the property. All measurements, distances and areas are approximate and for guidance only.